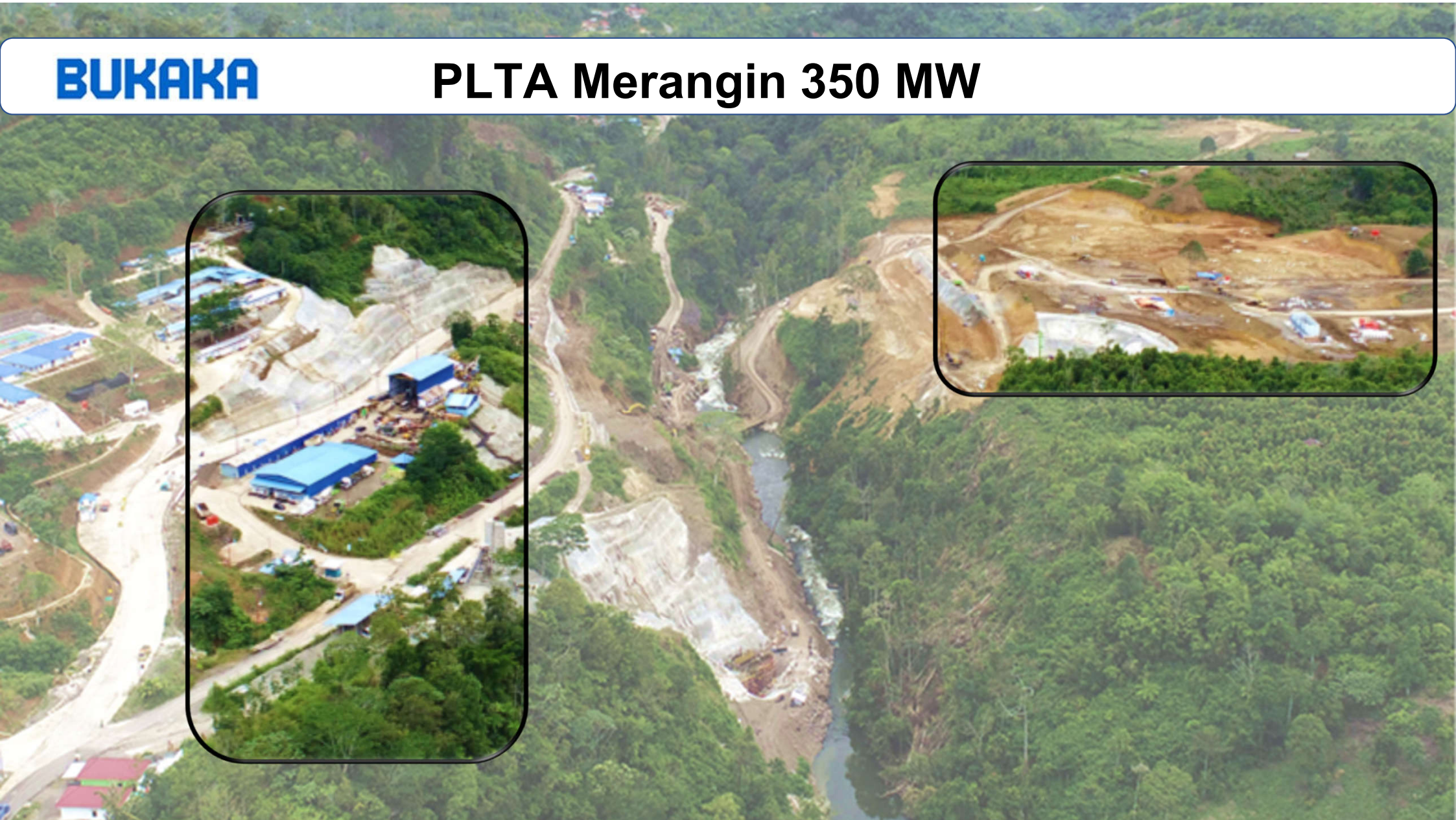


BUKAKA

PLTA Merangin 350 MW



PLTA Merangin 350 MW diperuntukan untuk beban puncak melalui jaringan Sumatera terkoneksi dengan T/L 150 kV ke Gardu Induk Bango dan Gardu Induk Sungai Penuh.

PLTA ini akan beroperasi dengan debit air 100m³/detik pada kapasitas 350 MW melalui sistem *Waterway Tunnel* termasuk (*Diversion Tunnel, Adit Tunnel, Headrace Tunnel dan Pressurized Tunnel/Penstock*) sepanjang ±10km dari *Power Intake (Gravity Dam)* hingga *Power House*.

HEPP Merangin 350 MW is intended for Peaker loads via the Sumatra Network connected by T/L 150 kV to Bango Substation and Sungai Penuh Substation. This Hydropower will operate with a water discharge of 100m³/second at a capacity of 350 MW, through the Waterway Tunnel system including (Diversion Tunnel, Adit Tunnel, Headrace Tunnel and Pressurized Tunnel/Penstock) along ±10km from the Power Intake (Gravity Dam) to the Power House.



Untuk mendukung tercapainya debit tersebut PT. Kerinci Merangin Hidro menunjuk PT. Bukaka Teknik Utama melalui kontrak no. 1.5.3.6/LH41/KMH-BTU/AK/IX/2022 tanggal 2 Sept 2019 untuk mengerjakan *Waterway Tunnel* tersebut.

Pekerjaan *Waterway Tunnel* sepanjang ±10km tersebut ditargetkan akan selesai pada akhir tahun 2024.

To support the achievement of the water discharge, PT. Kerinci Merangin Hidro appointed PT. Bukaka Teknik Utama through contract no. 1.5.3.6/LH41/KMH-BTU/AK/IX/2022 on 2 September 2019 to work on the Waterway Tunnel system.

The ±10km long Waterway Tunnel is targeted to be completed by the end of 2024



Headrace Tunnel

- Tunnel Length: 5982.89 m
- Circle Tunnel with 400 mm to 750 mm Concrete Lining Thickness
- Inside dimension: $\Phi 8$ m I/D

Tunnel Diversion

- Length = 345,66
- Dimension = 8 m (W) x 9,6 m (H)
- Concrete Lining Thickness = 350 mm to 600 mm



Work Adit

- D-Shape Tunnel
- Inside dimension: 7 m (W) x 6.35 m (H)
- Work Adit 1 (Tunnel Length: 376 m)
- Work Adit 2 (Tunnel Length 842.36m)
- Work Adit 3 (Tunnel Length: 404.99 m)



BUKAKA

Pressurized Tunnel (Penstock)

Pressurized Tunnel

- Tunnel Length: 4218.5 m
- Circle Tunnel with Steel Lining
- Inside dimension: $\Phi 4.8$ m I/D

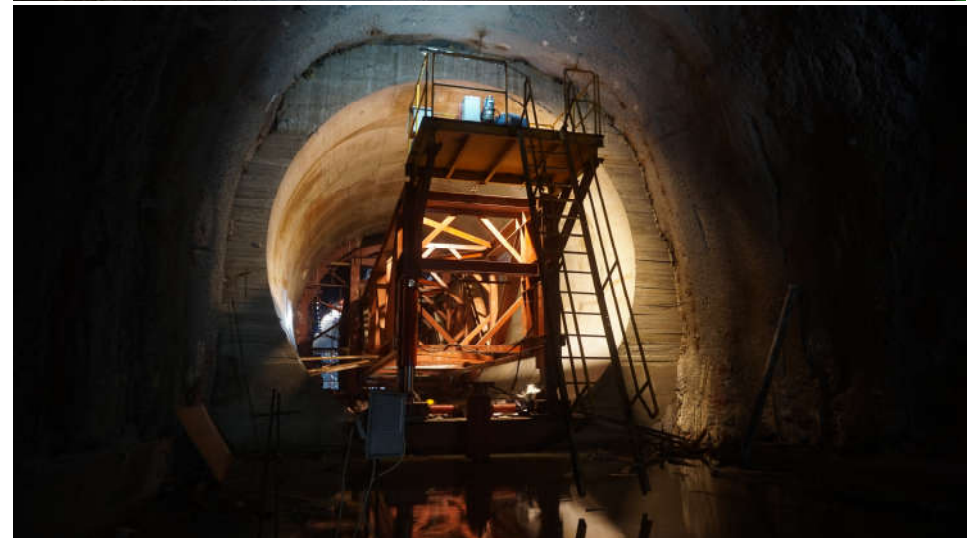


BUKAKA

Documentation

BUKAKA

Headrace Tunnel



BUKAKA

Diversion Tunnel



BUKAKA

Adit Tunnel



BUKAKA

Pressurized Tunnel (Penstock)



BUKAKA

Breakthrough Tunnel



BUKAKA

Breakthrough Tunnel



BUKAKA

Breakthrough Tunnel

